

Installation Instructions

Version 2.0.0.0 and higher



1 Installation Instructions

Before you start with the installation of the correlator programme, please carefully read and follow these Installation Instructions. In order to guarantee trouble-free operation of the correlator programme, must the following criteria be fulfilled. Please note that: Since the program can use for the LOKAL-100 and LOKAL-200PC hardware, apply different requirements!

1.1 Conditions for Hardware

The installation of the correlator often commodity requires it that the following requirements through the F.A.S.T. Correlator to be fulfilled.

Applies to LOKAL-100:

- F.A.S.T. correlator card
No correlator card should be present in the equipment or is defective, the program cannot be started.
- Pentium or compatibly CPU with 1 GHz or more
- 1 GB RAM
- Hard drive with 69.8 MB free disk space
- CD/DVD-Drive
- VGA / SVGA - Graphic card with a minimum resolution of 800 x 600 pixels
- Mouse and Keyboard

Applies to LOKAL-200PC:

- Pentium or compatibly CPU with 1 GHz or more
- 1 GB RAM
- Hard drive with 69.8 MB free memory
- USB-Anschluss
- CD/DVD-Drive

- VGA / SVGA - Graphic card with a minimum resolution of 800 x 600 pixels
- Mouse and Keyboard

1.2 Conditions for Software

The installation of the correlator program often commodity requires it, that one of the following operating systems, with the appropriate service pack, on the F.A.S.T. Correlator is installed. If the installation under another operating system should take place, the program cannot be started.

Applies to LOKAL-100:

- Windows 2000 / Service Pack 4 --> 32Bit
- Windows XP / Service Pack 3 --> 32Bit

Applies to LOKAL-200PC:

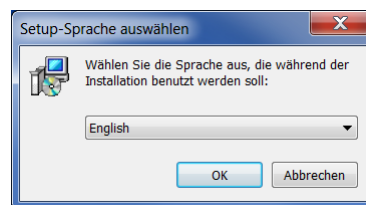
- Windows 2000 / Service Pack 4 --> 32Bit
- Windows XP / Service Pack 3 --> 32Bit and 64Bit
- Windows Vista / Service Pack 1 --> 32Bit and 64Bit
- Windows 7 / Service Pack 1 --> 32Bit and 64Bit

1.3 Installation correlation software

Attention!

For the installation and use of the correlator program you need administration rights to your LOKAL-100 correlator. If this should not be the case, the program cannot be started. For the LOKAL-200PC program administration rights only on the installation necessary.

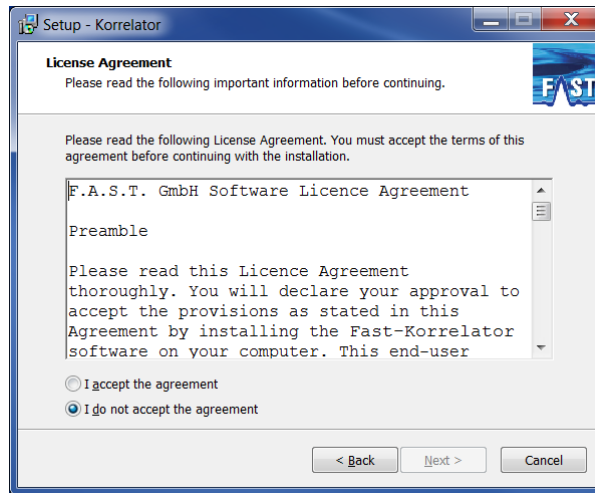
For the installation of the program you follow simply the steps of the installation program.



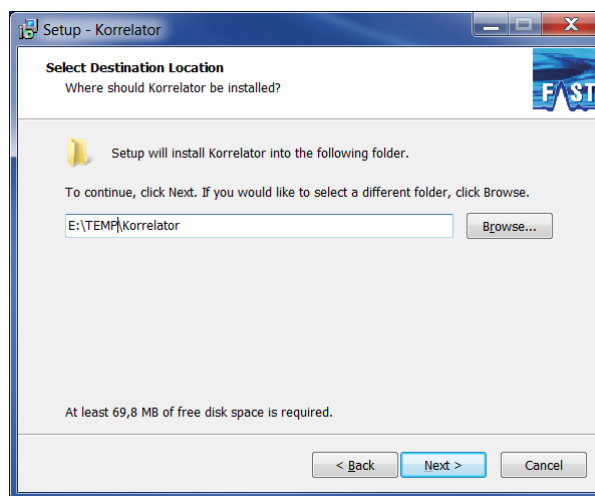
First a dialogue in that appears you the language, which is to be used during the installation to select to be able. At present German, English, French, Polish, Russian and Turkish are available.



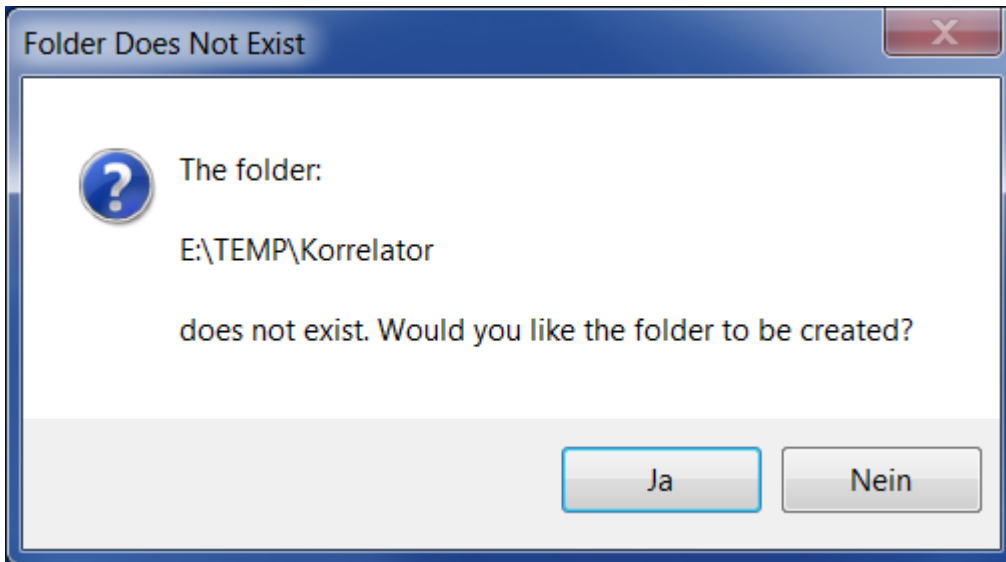
Whereupon following the installation begins with a greeting us window. Operate here please the “Next” button.



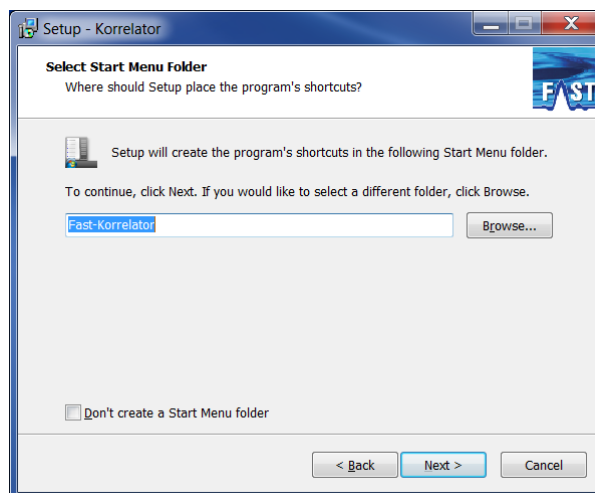
Continuing appears now the dialogue with the licensing agreement. Please carefully read it. If you agree with the licensing agreement mark please the point “I accept the agreement” and click on the “Next” button. You should the licensing agreement do not accept end the installation with this dialogue and the program are not installed.



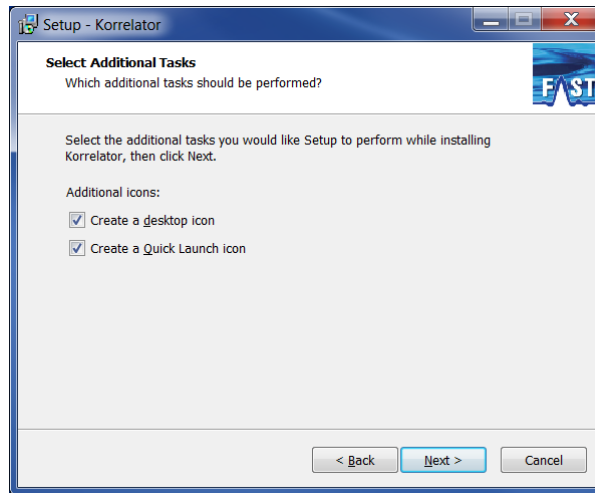
That windows which can be seen now, indicates the installation path to program which can be installed. For example “C:\Programme\Korrelator” appears according to standard as installation path in the input field, which you can change button however over “Browse”. All attitudes met to operate it to ask the “Next” button, in order to arrive into the next installation step.



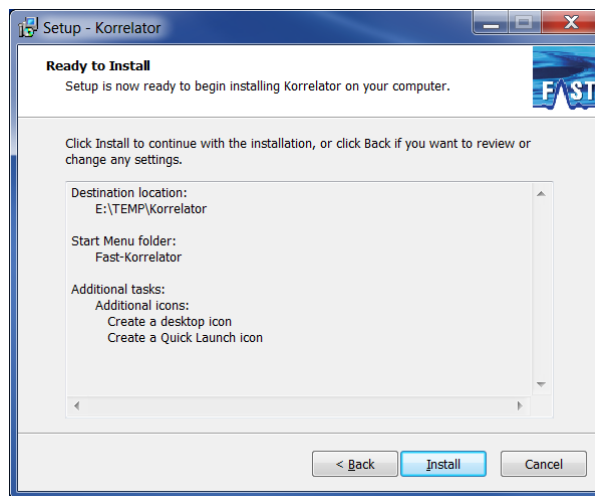
In these windows press the “Yes” button, around which folder is to be installed to put on in that the program.



The next dialogue appears for the input of the name for the starting menu folder. In the input field according to standard “Fast-Korrelator” is located, this can you over “Browse” for button likewise change. All attitudes are met press you please the head “Next”.



On it following you can still specify now whether a Icon on the Desktop is to be put on or not. All attitudes met to operate it to ask the “Next” button and in the next dialogue “Install” button. The installation of the program is started thereby.



1.4 Installation files

Attention!

For the operation of the software a license file (Config.kid) is required, which are in the "LODData" of the installation directory must be located. Is this not the case, the program is not running. You can get the license file from F.A.S.T. GmbH.